

Set Stakes for Invert Grade
Sta 58+70 to 59+20

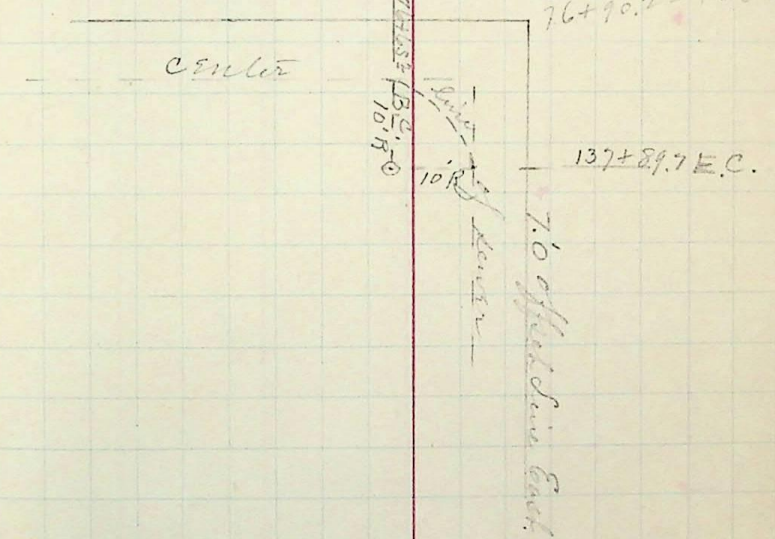
A. M. Oct 3rd 1890

Set Stakes for Invert Grades
from Sta 72+50 to Sta 73+10

A. M.
Oct 6th 1890

Give Exc Stakes on Wall at
7 ft East of Sewer Center from

Sta 137+89.7 to 131+50
76+90.7 = 138+197



Set Man hole stakes at Sta 63+22.5

P. M.
Oct 7th 1890